

BeerMe

User Flows

Background

Six user flows were created to understand the steps users will take to accomplish their goals. The tasks used address common functionality and user goals. The user flows will also influence future wireframes.

User Flows

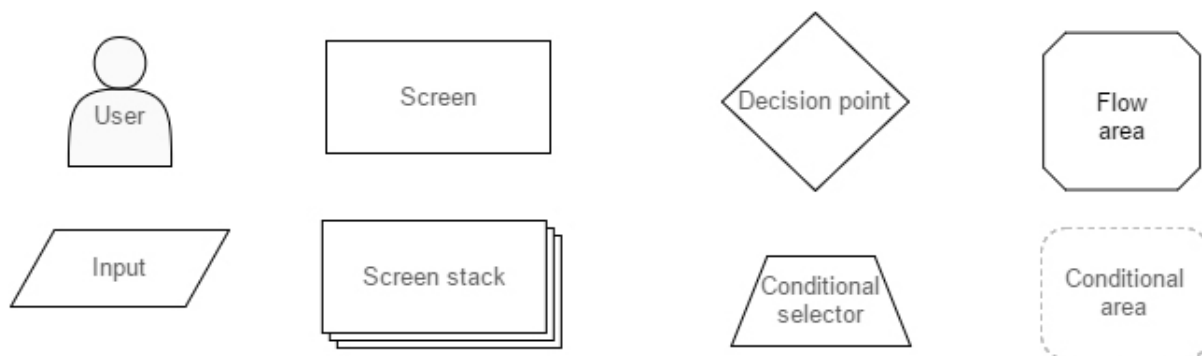
1. Login or sign up
2. Setup profile
3. Look up beer
4. Rate beer
5. Find a seasonal beer on tap nearby
6. Try a new beer in my favorite styles or from my favorite brewers, within 30 miles

Draft user flows can be found in the Appendix.

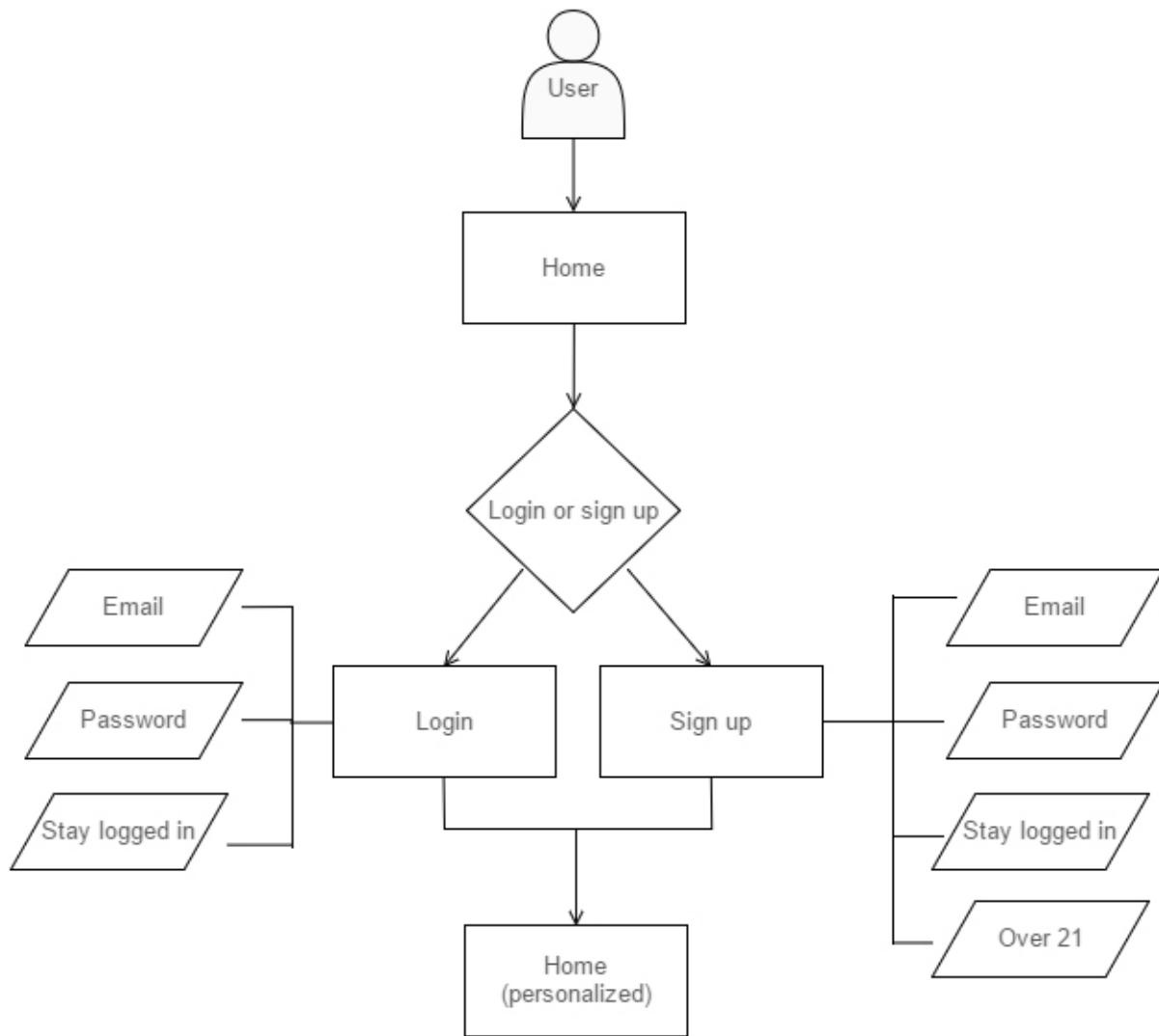
Legend

The following user flows follow Jesse James Garrett's visual vocabulary. More details are available at the link below.

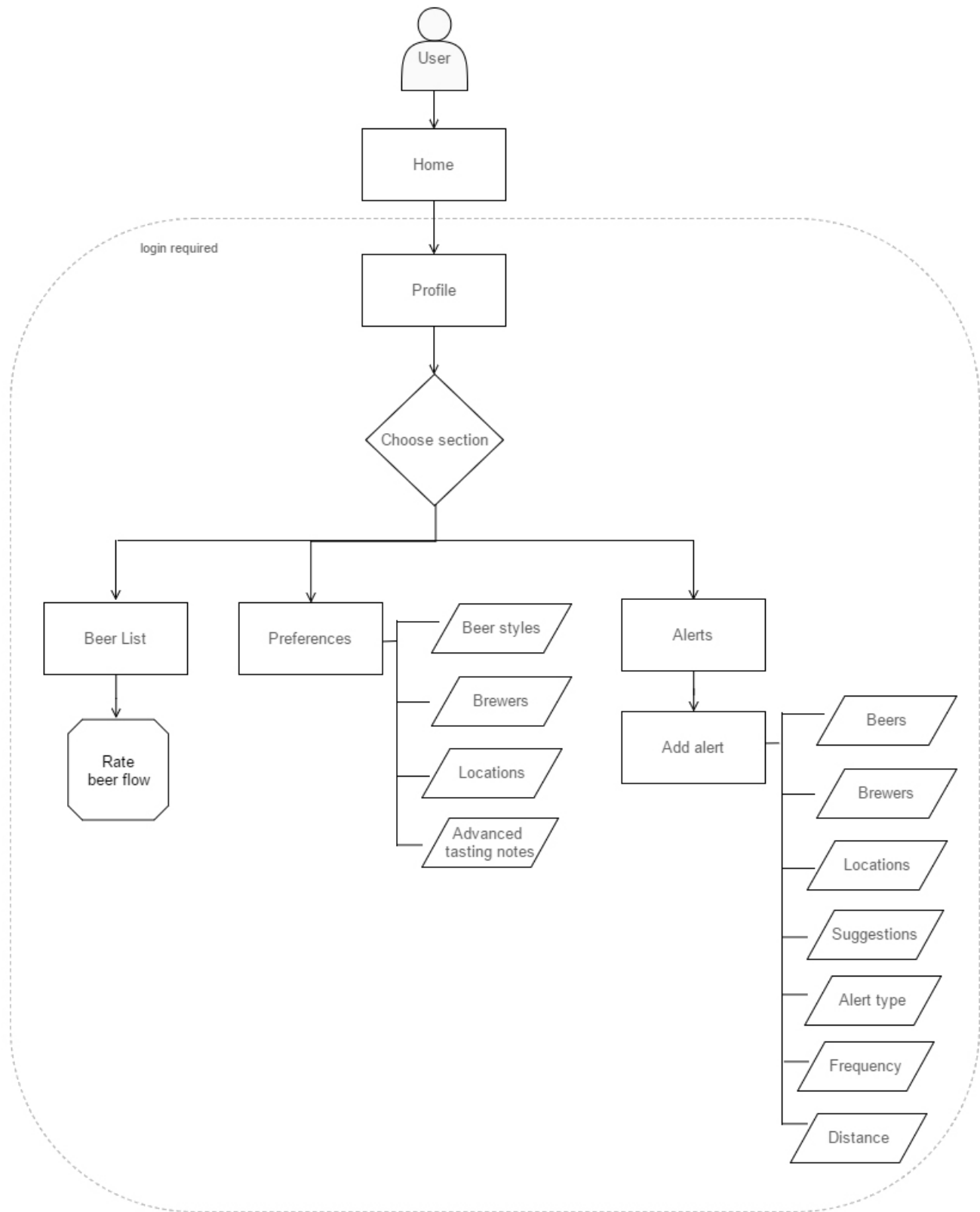
<http://www.jjg.net/ia/visvocab/>



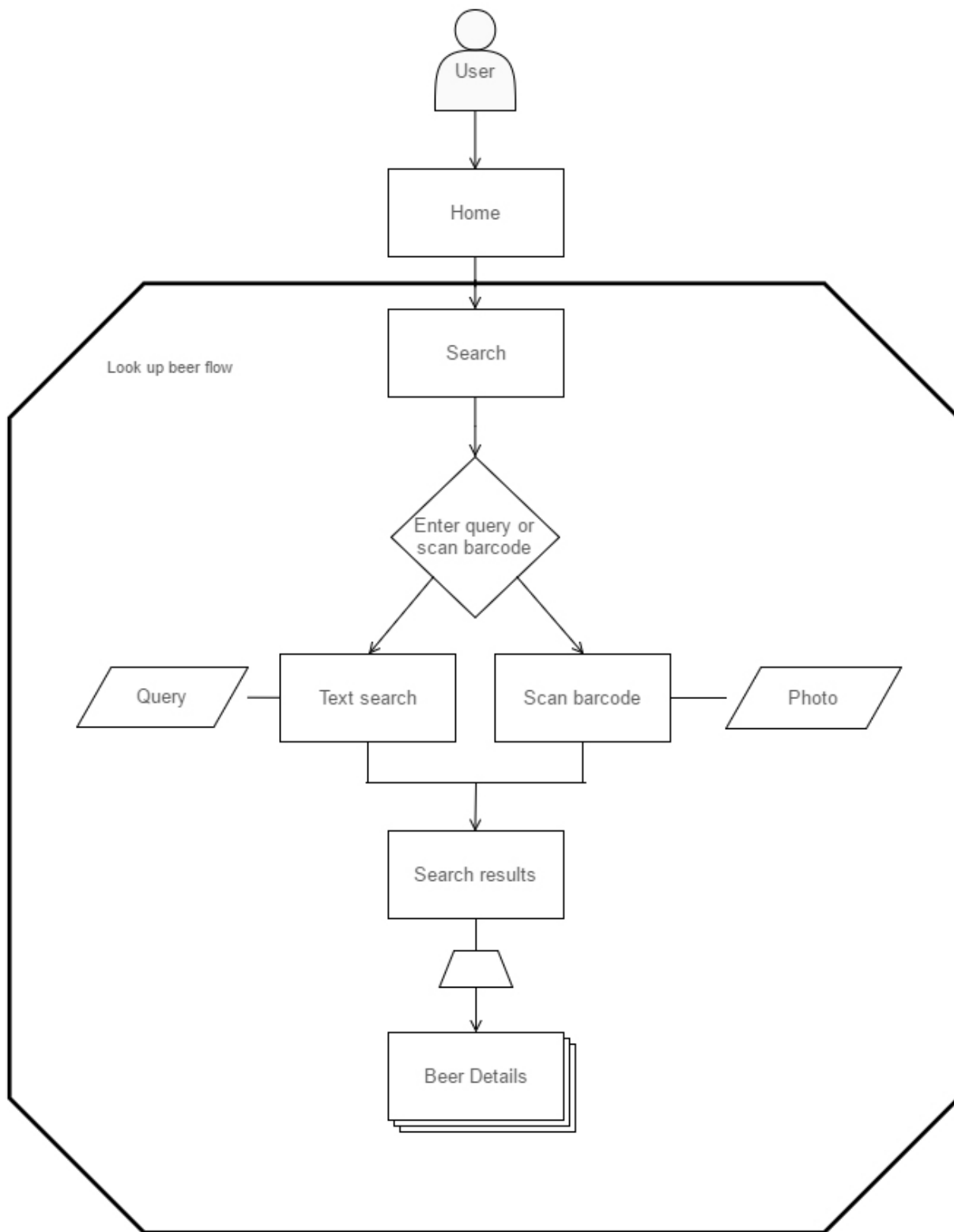
1. Login or sign up



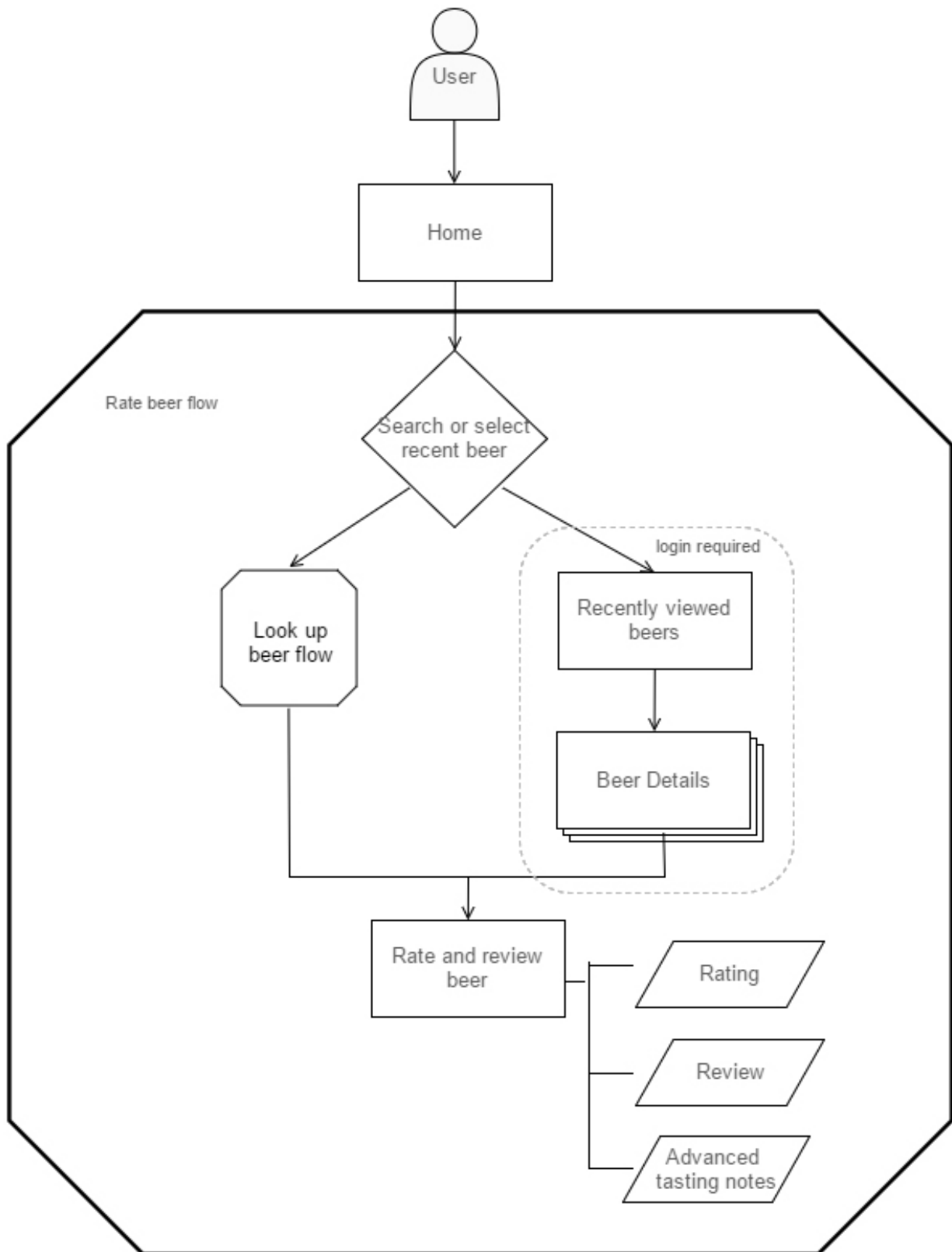
2. Setup profile



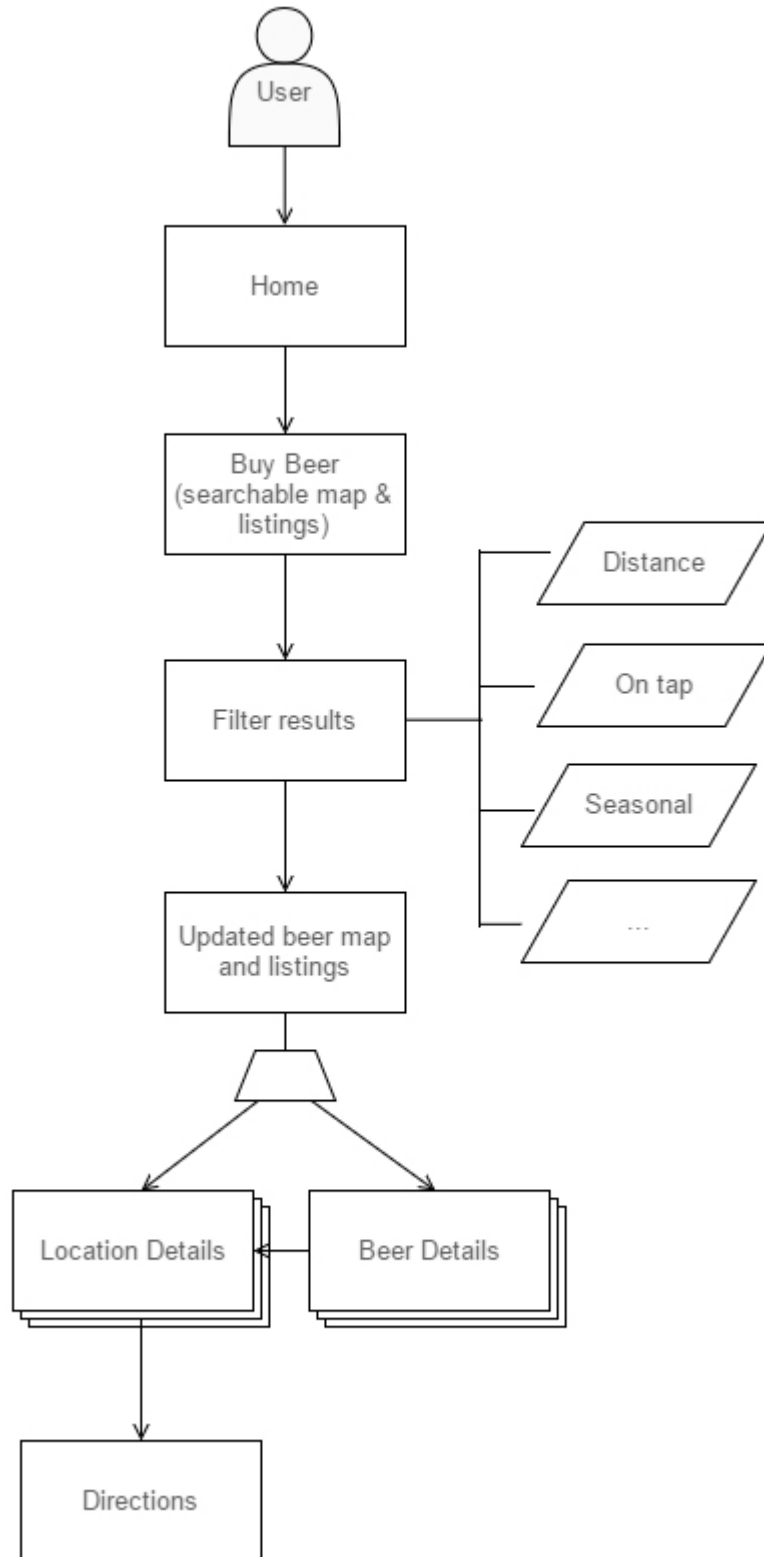
3. Look up beer



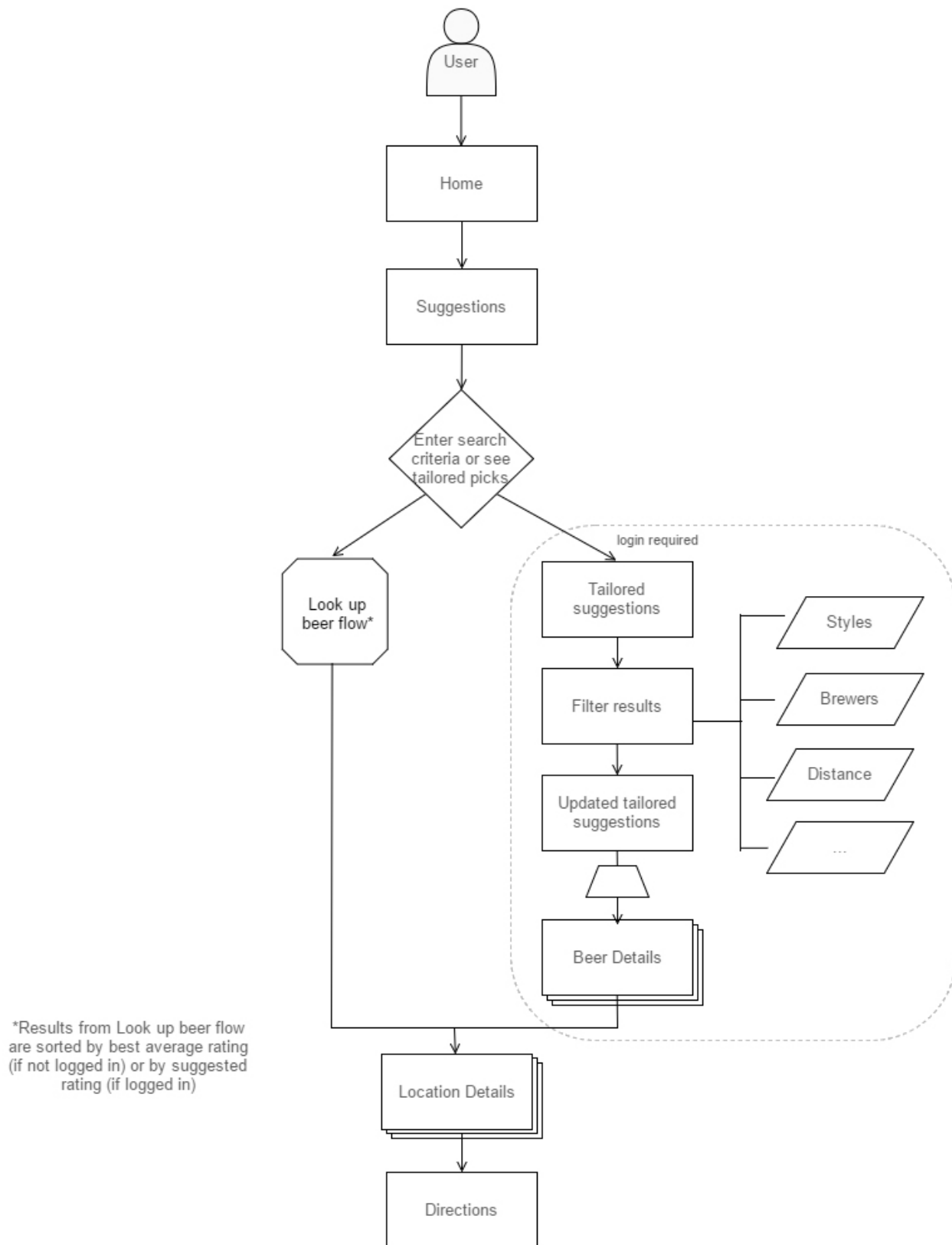
4. Rate beer



5. Find a seasonal beer on tap nearby



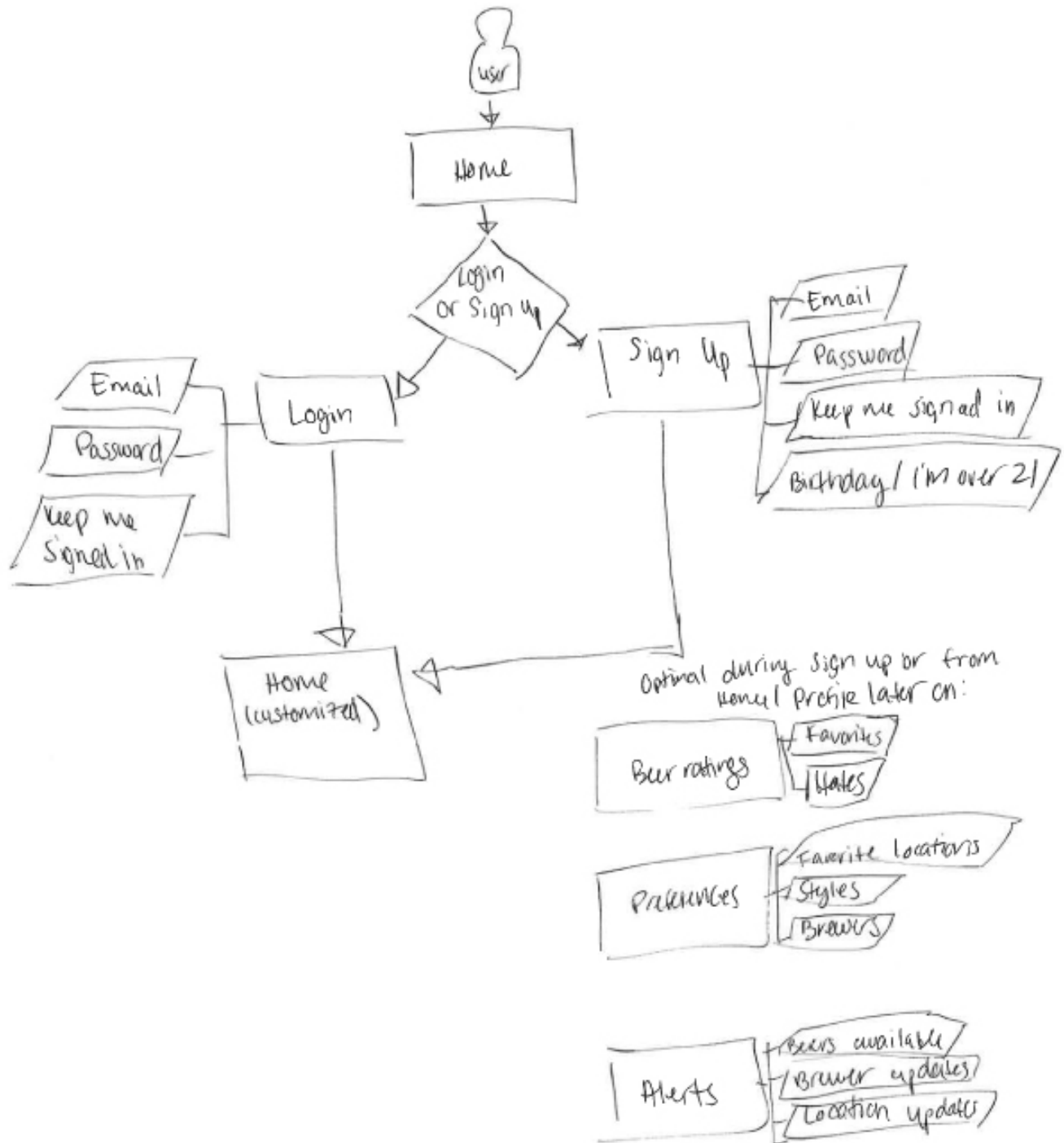
6. Try a new beer in my favorite styles or from my favorite brewers, within 30 miles



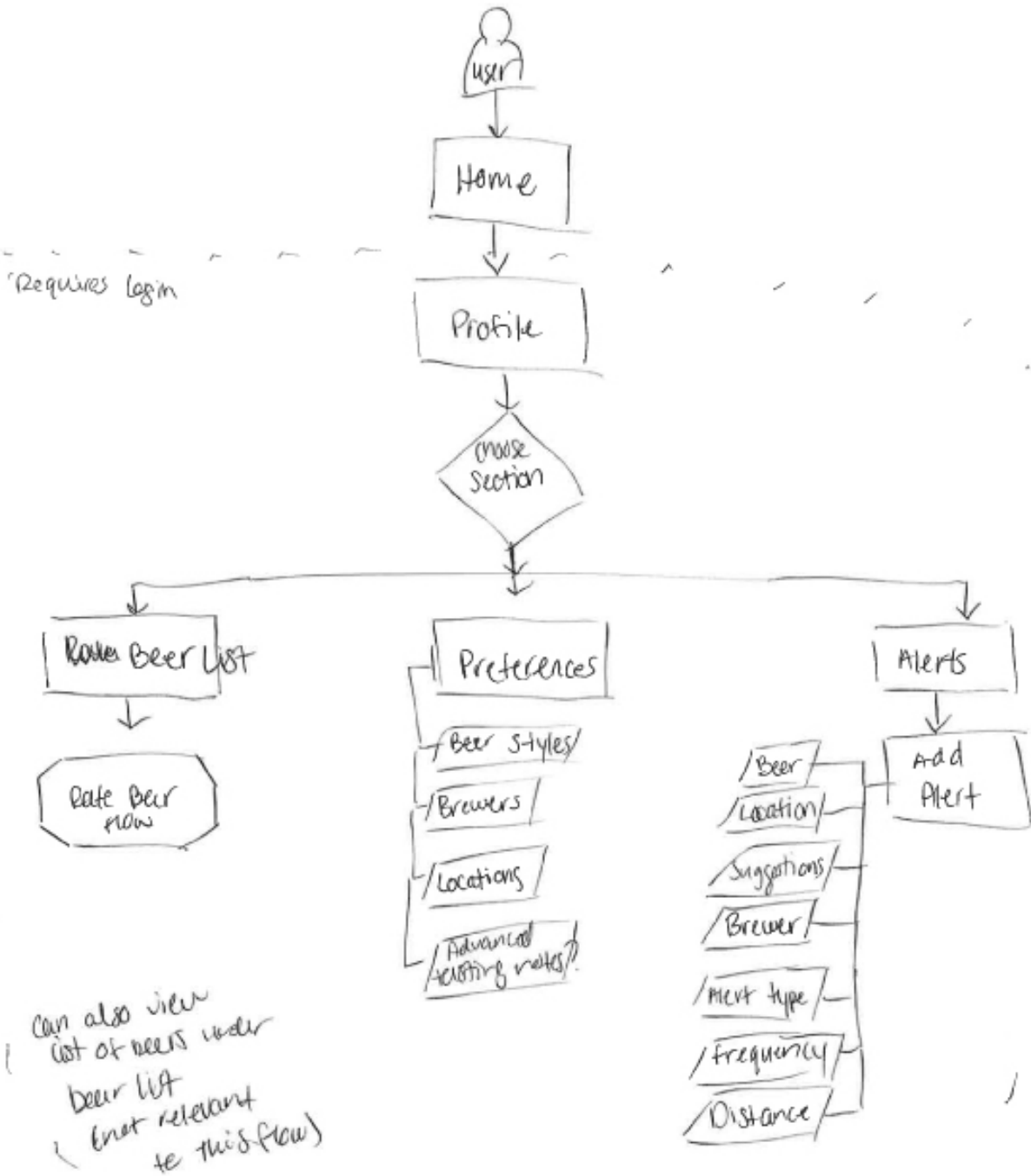
Appendix

Draft User Flows

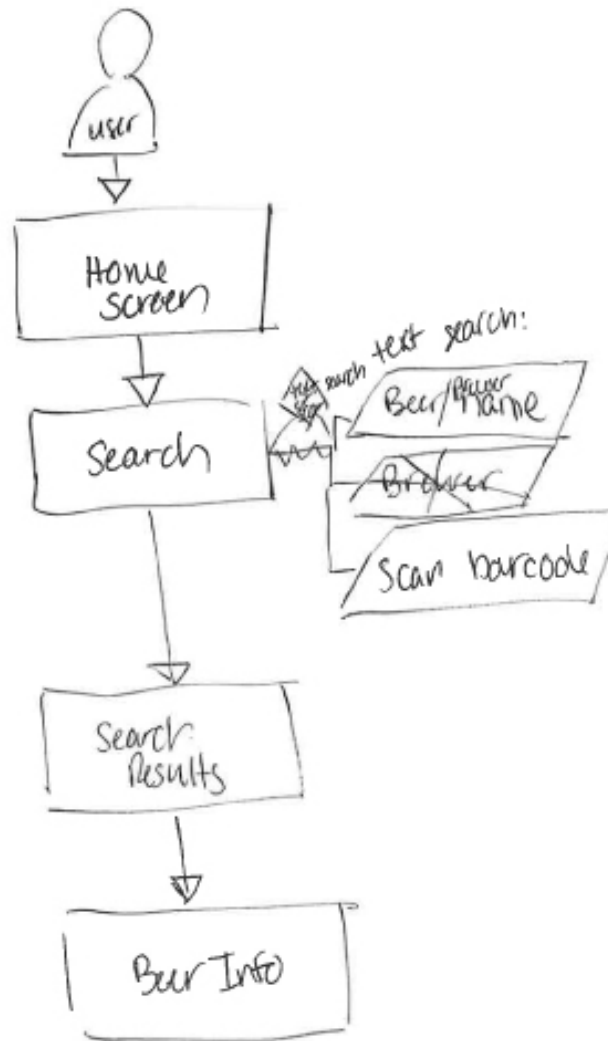
Login or Sign Up



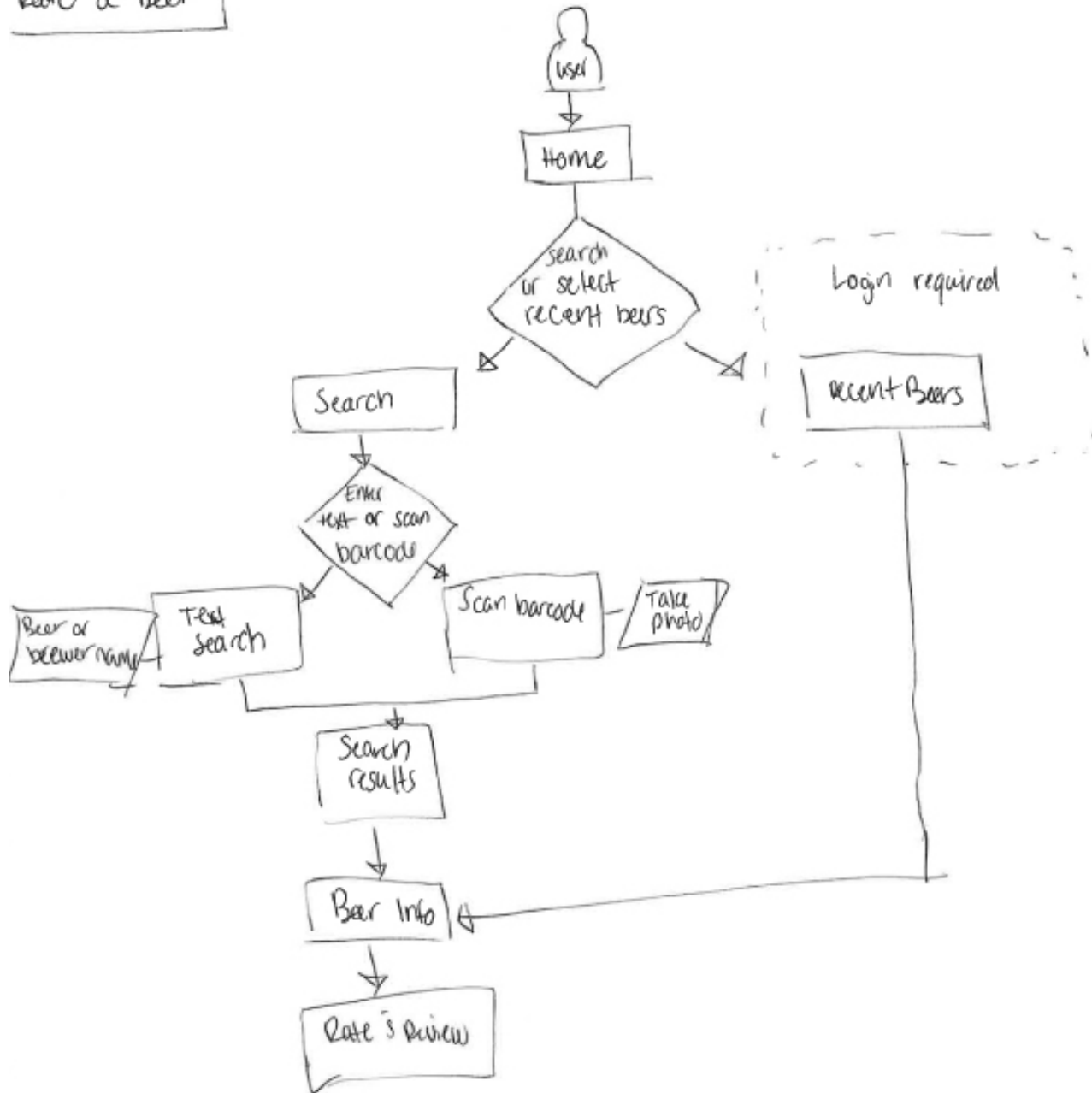
Setup Profile



Look up a beer



Rate a beer



Try a new beer in my favorite styles or from my favorite brewers

